

**PortaScope.com**

VET-OR1200 HD  
VETERINARY ENDOSCOPE CATALOGUE



**1800Endoscope.com LLC**  
**+ 941 209 8276 SMS / Text / Whatsapp**  
**sales@1800endoscope.com**



# VET-OR1200 HD

VETERINARY ENDOSCOPE

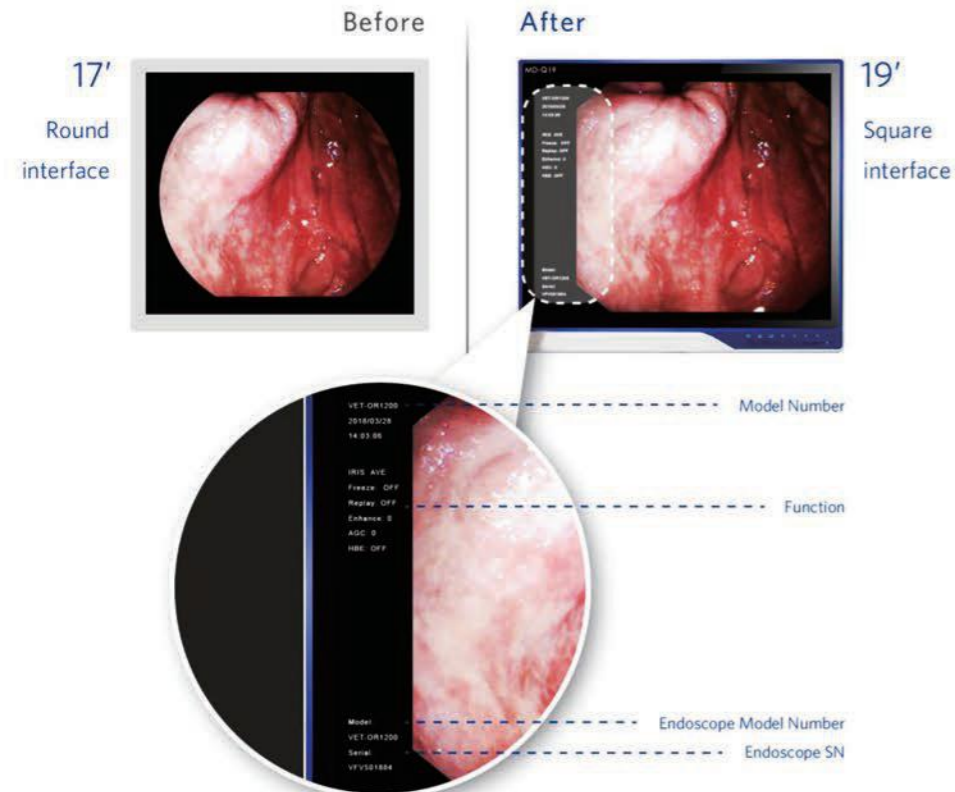
PortaScope.com



## VET-OR1200HD Imaging Processor

Observation	Video Signal Outputs	Y/C, DVI, AV	Observation	Freeze/Back	HD images can be frozen, saved and reviewed.	
	Image Enhancement	profile enhance, 0-3 steps		Power	Voltage	~110V/220V AC (± 10%)
	Brightness Adjustment	± 50 steps			Frequency	50Hz/60Hz
	IRIS	Average, Peak		Air pump	Air flow	≥ 5L/min
	AGC	Electronic emphasis on mucosal morphology or outline to enhances the sharpness of the endoscopic image.			Air pressure	30-80kPa
	W.B	Press the switch W.B to achieve the white balance adjustment.		Lighting	Bulb	LED
	Photo/ Record	HD images / video can be saved.			Colour temperature	≥ 5500K

## HD New Display



## HD image

Megapixel Display HD display, true representation

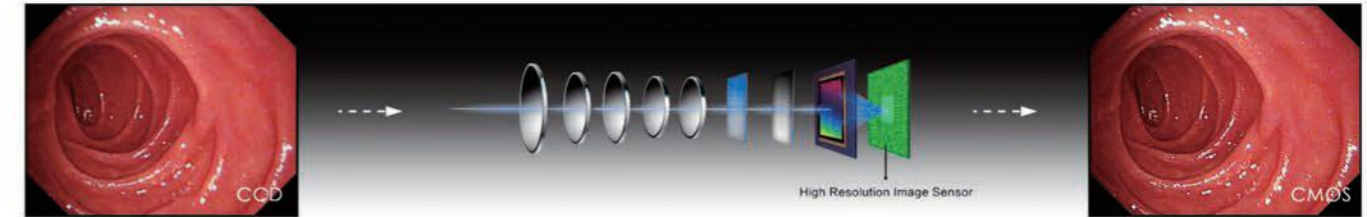
### Comparison - SD VS HD

High-definition image display, more details, clearly looking into any subtle changes before the eyes



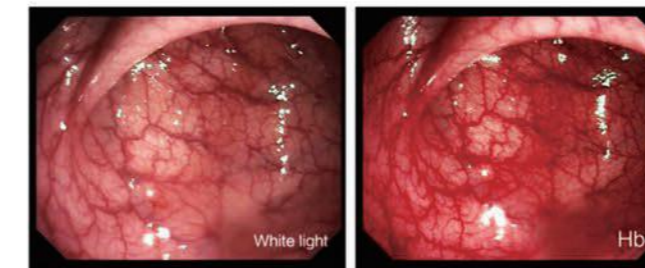
### Clinical- CCD VS CMOS

With high resolution image sensor, and introducing digital image processing technology, it can protect the endoscopic color and present the most high-quality images.



## (HbE) Hemoglobin Enhancement

The powerful upgraded HbE function can better highlight the hemoglobin in the blood and has obvious invigorating effect on the possible blood-flow direction in the diseased tissue.



## USB Function

The USB interface can be used to store video and still images using U disk.



## Brand-new Motus 3.0 image processing platform

- High data processing capacity
- Full digital image processing
- High modularization
- A variety of interfaces



1800Endoscope.com LLC  
+ 941 209 8276 SMS / Text / Whatsapp

## Companion Animal Video Endoscopes

With the extended length and sleek design, multipurpose veterinary endoscopes are ideal for numerous companion animal applications.

Upper and lower gastrointestinal endoscopy is perhaps the most widely indicated application of endoscopy in companion animals. A partial list of indications includes regurgitation, dysphagia, salivation, nausea, vomiting, hematemesis, melena, anorexia, diarrhea, weight loss, hematochezia, fecal mucus and tenesmus.

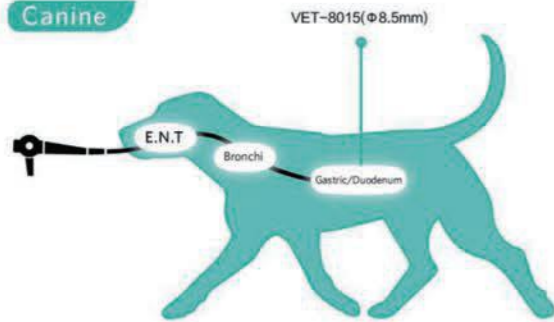
### VET-8015

Working length	1500 mm
Diameter of distal-end	8.5 mm
Diameter of instrument channel	2.0 mm
Range of bending	U210° D90° R/L100°

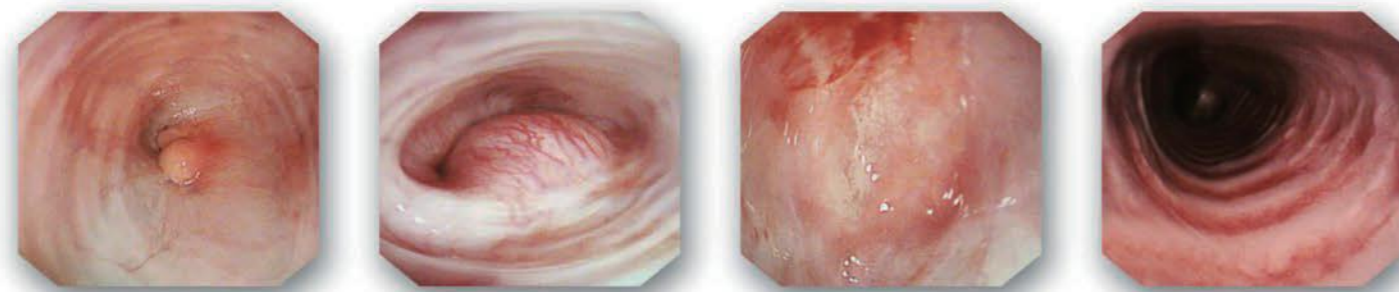
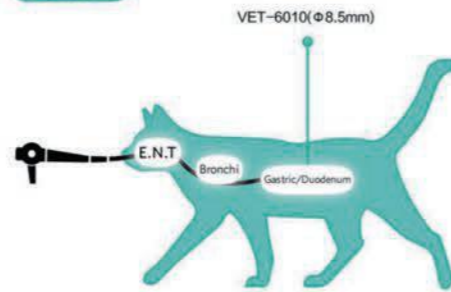
### VET-6010

Working length	1000 mm
Diameter of distal-end	5.8 mm
Diameter of instrument channel	2.0 mm
Range of bending	U180° D160°

#### Canine



#### Feline



## Large Animal Video Endoscopes

With the extended length and sleek design, multipurpose veterinary endoscopes are ideal for numerous large animal applications, including: Gastroscopy, Esophagoscopy, Tracheoscopy, Rhinoscopy, Pharyngoscopy and Laryngoscopy. Large working channel facilitates bigger biopsies to ensure a more accurate diagnosis. Uniform image brightness, even under difficult lighting conditions

### VET-9215

Working length	1500 mm
Diameter of distal-end	9.0 mm
Diameter of instrument channel	2.8 mm
Range of bending	U210° D90° R/L100°

### VET-9830

Working length	3000 mm
Diameter of distal-end	9.6 mm
Diameter of instrument channel	2.8 mm
Range of bending	U210° D90° R/L100°

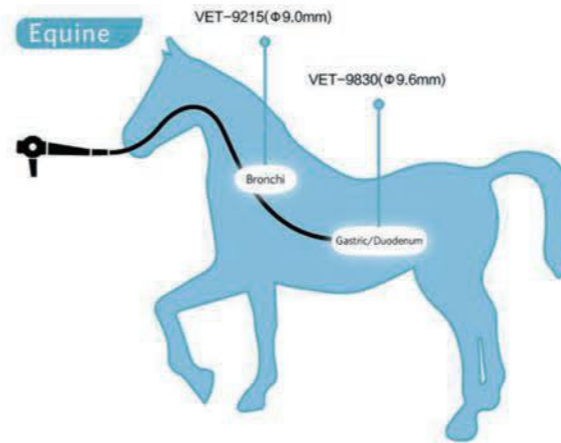
### VET-1330

Working length	3000 mm
Diameter of distal-end	12.8 mm
Diameter of instrument channel	3.7 mm
Range of bending	U/D180° R/L160°

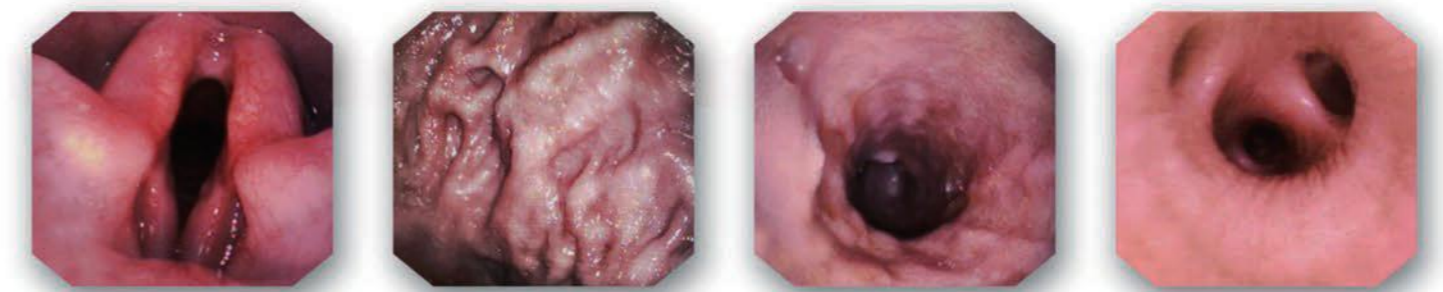
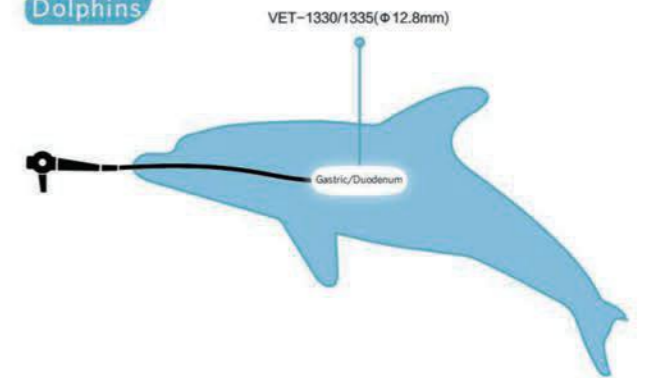
### VET-1335

Working length	3500 mm
Diameter of distal-end	12.8 mm
Diameter of instrument channel	3.7 mm
Range of bending	U/D180° R/L100°

#### Equine



#### Dolphins



# All-in-one Portable Video Endoscope



<p>① CMOS High Technology</p> 	<p>② Bending 2 Section</p>  <p>UP 210° Down 90° Left 100° Right 100°</p>	<p>③ Instrument Channel</p>  <p>2.6mm</p>	<p>④ Detachable Suction Valve</p> 
<p>⑤ 16GB SD Card</p> 	<p>⑥ External LED Light Source</p> <p>Advantages: Greatly reduce the temperature of distal end and after-sales costs; with electric isolation, improve the safety standard of clinical application</p> 	<p>⑦ High-Definition Screens</p> 	<p>⑧ High Quality Video Connector</p> 

## Portable Video Endoscope

MVE series (MVE-5010/6010 MVE-9215)

The MVE 5010/6010 & MVE-9215 are the self-contained ambulatory endoscopy systems. With integral screen, battery and recording capabilities, the MVE-5010/6010 & MVE-9215 are extremely cost-effective.

The complete ambulatory system has a broad range of applications including ear, nose, throat, urinary tract and bladder amongst others. The ambulatory video bronchoscope is the perfect solution for in surgery or ambulatory diagnosis.

### MVE-5010

Working length	1000 mm
Diameter of distal-end	5.2 mm
Diameter of instrument channel	2.2 mm
Range of bending	U140° D130°

### MVE-6010

Working length	1000 mm
Diameter of distal-end	5.8 mm
Diameter of instrument channel	2.6 mm
Range of bending	U140° D130°

### MVE-9215

Working length	1500 mm
Diameter of distal-end	9.0 mm
Diameter of instrument channel	2.8 mm
Range of bending	U210° D90° R/L100°



**1800Endoscope.com LLC**  
**+ 941 209 8276 SMS / Text / Whatsapp**  
**sales@1800endoscope.com**

## Portable Fiber Endoscope

Portable design provides the most convenient and quick endoscopy. Equipped with portable LED light source, which can provide bright and high-quality lighting under any circumstances.

Waterproof design for the insertion tube, convenient for cleaning and disinfection.

### BBF-5

Working length	600 mm
Diameter of distal-end	4.8 mm
Diameter of instrument channel	2.2 mm
Range of bending	U160° D130°



## Veterinary Endoscopic Accessories and Stent

### Biopsy

1. Disposable Biopsy Forceps
2. Disposable Cytology Brush

### Polypectomy

1. Disposable Snare
2. Disposable Hot Biopsy Forceps

### Foreign Body Removal

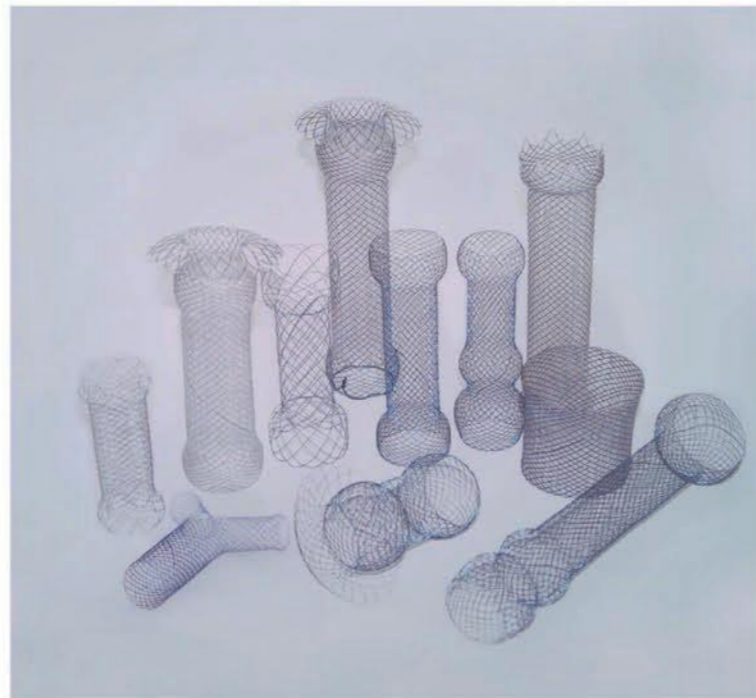
1. Disposable Grasping Forceps

### Cleaning

1. Disposable Cleaning Brush

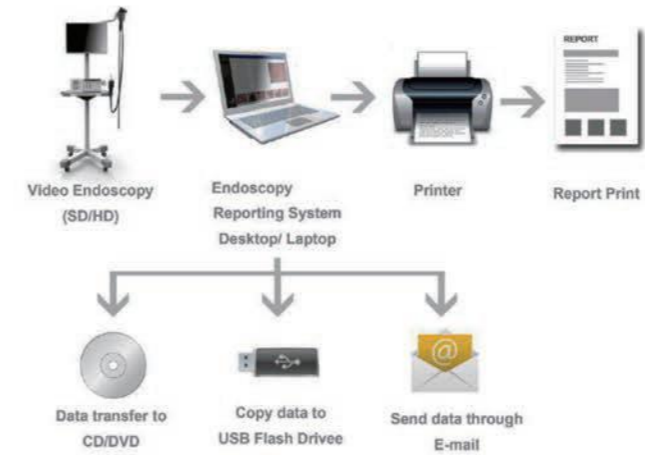
### Stent

1. Esophageal Stent
2. Tracheal and Bronchial Stent
3. Intestinal Canal Stent
4. Individual Stent



## Reporting System Software

- Video and picture recording;
- Patient Reporting multiple outlets and multi languages;
- DICOM compatible;
- Friendly installation and operation.



## Medical Monitor & Mobile Trolley

### Reporting System Software

- 19 inch medical grade monitor
- Can restore medical image truly and accurately.
- High brightness, high contrast ratio and wide viewing angle

### Mobile Trolley

- Medical Mobile trolley with small size and light weight, easy to install and move.

**1800Endoscope.com LLC**  
**+ 941 209 8276 SMS / Text / Whatsapp**  
**sales@1800endoscope.com**

