



Main Features

- Superior image quality with crisp, clear images and true-to-life color rendition in an easy-to-view large display size.
- Slim design : 8.8 mm diameter along the entire insertion tube for improved insertion capability.
- A 2.8 mm diameter instrument channel ensures that a wide range of endo therapy accessories can be used.
- 4-way angulation (210° up, 90° down, and 100°right/left) enables complete and comprehensive observation within the upper gastrointestinal tract.
- Extra-wide 140° field of view enables accurate observation of a wide area.
- Ergonomically designed grip enhances scope maneuverability while easy-to-access controls and user programmable switches improve operability.
- Fully compatible with the CV-160/140.

- Scope ID function stores individual scope information in the built-in memory chip and displays it on the monitor, facilitating endoscopy suite management.

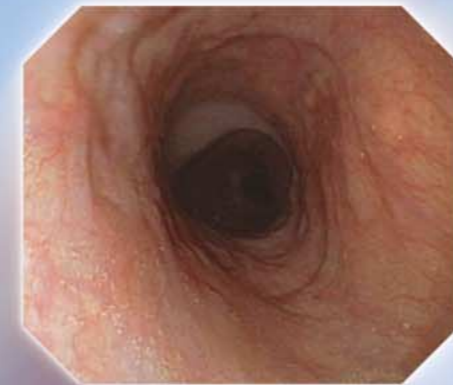
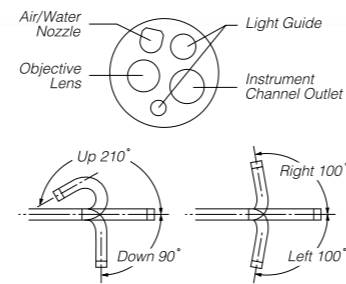


Start-up display



Specifications

Optical System	Field of view	140°
	Direction of view	Forward viewing
	Depth of field	3 to 100 mm
Distal End	Outer diameter	8.8 mm
	Insertion Tube	Outer diameter
Bending Section	Angulation range	Up 210°, Down 90°, Right 100°, Left 100°
Working Length		1030 mm
Total Length		1345 mm
Instrument Channel	Inner diameter	2.8 mm
	Minimum visible distance	3 mm from the distal end
	Endo therapy accessory entrance/exit position in field of view	



Outstanding image quality and performance in a slim, 8.8mm diameter scope

Specifications, design and accessories are subject to change without any notice or obligation on the part of the manufacturer.

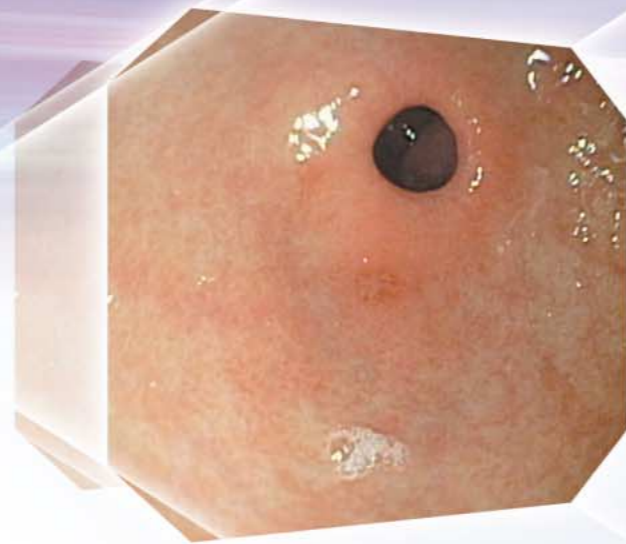


OLYMPUS MEDICAL SYSTEMS CORP.
Shinjuku Monolith, 3-1 Nishi-Shinjuku 2-chome, Shinjuku-ku, Tokyo 163-0914, Japan
OLYMPUS MEDICAL SYSTEMS EUROPA GMBH
Postfach 10 49 08, 20034 Hamburg / Wendenstrasse 14-18, 20097 Hamburg, Germany
OLYMPUS AMERICA INC.
2 Corporate Center Drive, Melville, N.Y., 11747-3157, U.S.A.
OLYMPUS LATIN AMERICA, INC.
6100 Blue Lagoon Drive, Suite 390 Miami, Florida 33126-2087, U.S.A
KEYMED LTD.
Keymed House, Stock Road, Southend-on-Sea, Essex SS2 5QH, England

OLYMPUS SINGAPORE PTE LTD.
491B River Valley Road #12-01/04, Valley Point Office Tower, Singapore 248373
OLYMPUS HONG KONG AND CHINA LIMITED
Room 1520-1527, Ocean Centre, 5 Canton Road, Tsimshatsui, Kowloon, Hong Kong
OLYMPUS (BEIJING) SALES & SERVICE CO., LTD.
Room 1401, East Tower, Gong Yuan No.6 Royal Palace, No.6 Gong Yuan Xijie, JiaoGuoMenNei, DongCheng District, Beijing, 100005, China
OLYMPUS MOSCOW LIMITED LIABILITY COMPANY
117071, Moscow, Malaya Kaluzhskaya 19, bld. 1, 1L2, Russia
OLYMPUS AUSTRALIA PTY LTD
31 Gilby Road, Mount Waverley, VIC., 3149, Australia

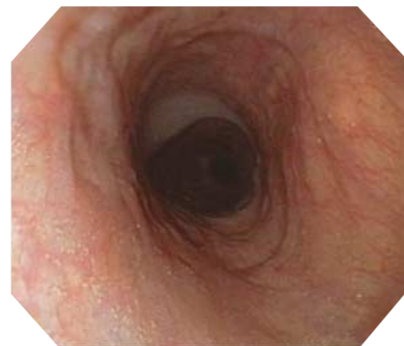
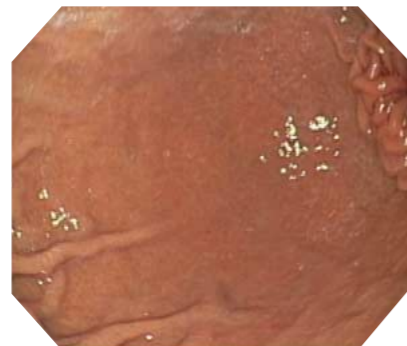
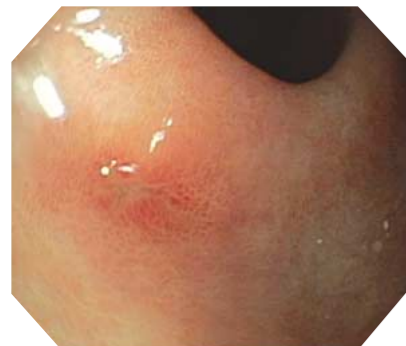
Combining high image quality with slim design, this scope is ideal for a wide range of applications, from observation to treatment, in the upper gastrointestinal tract

Image quality without compromise — the GIF-Q180 measures only 8.8 mm along the entire insertion tube. This slim design allows smooth insertion into the upper gastrointestinal tract. At the same time, you will enjoy brilliant images that are clear and sharp from edge to edge and displayed on the monitor in a large display size. Versatility and state-of-the-art image resolution combine to make this the ideal solution for today's most exacting procedures.



■ Clear, sharp images with large image capability

Dynamic images with excellent detail, while the larger display size makes for optimum observation. Accurate rendering of subtle textures and fine capillaries on the esophageal and gastric walls ensures reliable, efficient examination and treatment.



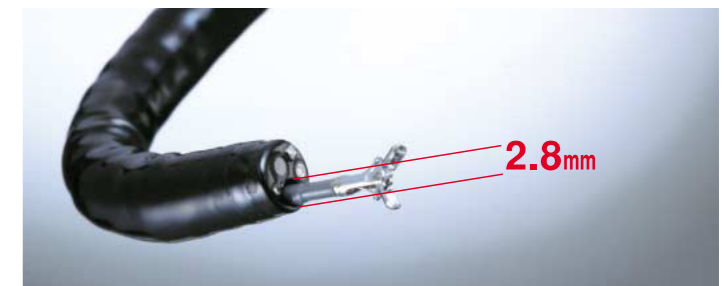
■ Slim 8.8 mm diameter distal end and insertion tube

The GIF-Q180 measures just 8.8 mm in diameter at both the distal end and along the insertion tube. Improved insertion capability makes this scope easier for patients to tolerate and easier for physicians to maneuver.



■ Generous 2.8 mm diameter instrument channel

Despite the reduction in the scope's outer diameter, the GIF-Q180's instrument channel has a diameter of 2.8 mm, which can easily accommodate a wide range of endo therapy accessories.



■ Easy endoscopy suite management and future expansion

The GIF-Q180 incorporates a memory chip to store scope information such as model number, serial number, basic specifications, and white balance setting. This also makes the scope ready for next-generation system expansion.